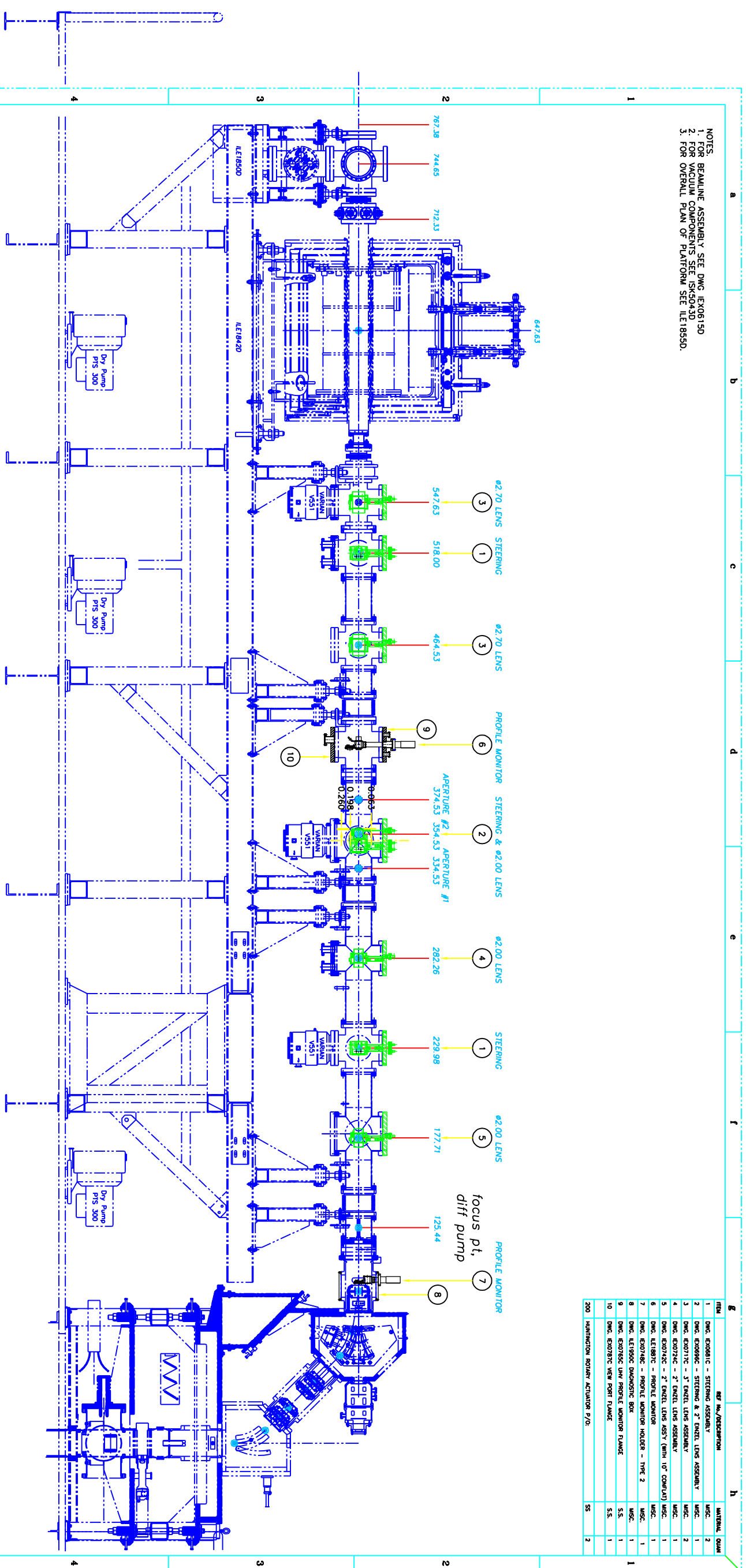


NOTES:  
 1. BEAMLINE ASSEMBLY SEE DWG. IEX06150  
 2. FOR MEDIUM COMPONENTS SEE IEX06150  
 3. FOR OVERALL PLAN OF PLATFORM SEE IEL18550.



ITEM	REF. NO./DESCRIPTION	MATERIAL	QTY
1	DMC. E0081C - STEERING ASSEMBLY	MISC.	2
2	DMC. E0086C - STEERING & 2" ENCEL LENS ASSEMBLY	MISC.	1
3	DMC. E0077C - 3" ENCEL LENS ASSEMBLY	MISC.	2
4	DMC. E0078C - 3" ENCEL LENS ASSEMBLY	MISC.	1
5	DMC. E0072C - 2" ENCEL LENS ASSY (WITH 10" CONFLAT)	MISC.	1
6	DMC. E0073C - PROFILE MONITOR	MISC.	1
7	DMC. E0074C - PROFILE MONITOR HOLDER - TYPE 2	MISC.	1
8	DMC. E0195C DIAPHRAGM BOX	S.S.	1
9	DMC. E0075C UHV PROFILE MONITOR FLANGE	S.S.	1
10	DMC. E0076C VIEW PORT FLANGE	S.S.	1
200	HUMIDIFICATION ROTARY ACTUATOR P/O	SS	2

TOLERANCES UNLESS OTHERWISE SPECIFIED		DATE	BY	CHKD
FUNCTIONS	± 1/32"	2	SS/RL	ISSUED
DIMENSIONS	± 0.005"	2	SS/RL	22/03
ANGLES	± 0.01°	2	SS/RL	22/03
SURFACE FINISH	125 μm	2	SS/RL	22/03
ALL DIMS IN INCHES				
DESIGNED C.A./D.A.	DR.-			
DRAWN DIMENSIONAL	SSB-ASSY			
CHECKED C.A.	ASSY/MT			
TR-DM-				

MPET OPTICS LAYOUT  
 PENNING TRAP UHV BEAMLINE ASS'Y  
 TITAN PLATFORM - ISAC 1  
 SCALE 1/10  
 DATE 21-09-06  
 Dwg No. IEX0695D  
 Rev. A

TRUMP  
 4000 UNIVERSITY DRIVE  
 CANADA'S NATIONAL MESON FACILITY